



#14858 ~ Vacant Land

**15857 Northlake Boulevard
West Palm Beach, FL 33412**

Land

Parcel Control Number: 00-41-42-18-00-000-7720

Land Size: 1.39 Acres

Assessment: \$ 85,068.

Taxes (2021): \$ 2,350.

Zoning: 00 – Unincorporated Palm Beach County

Use Code: 0000 - Vacant

Updated: 02/08/2022

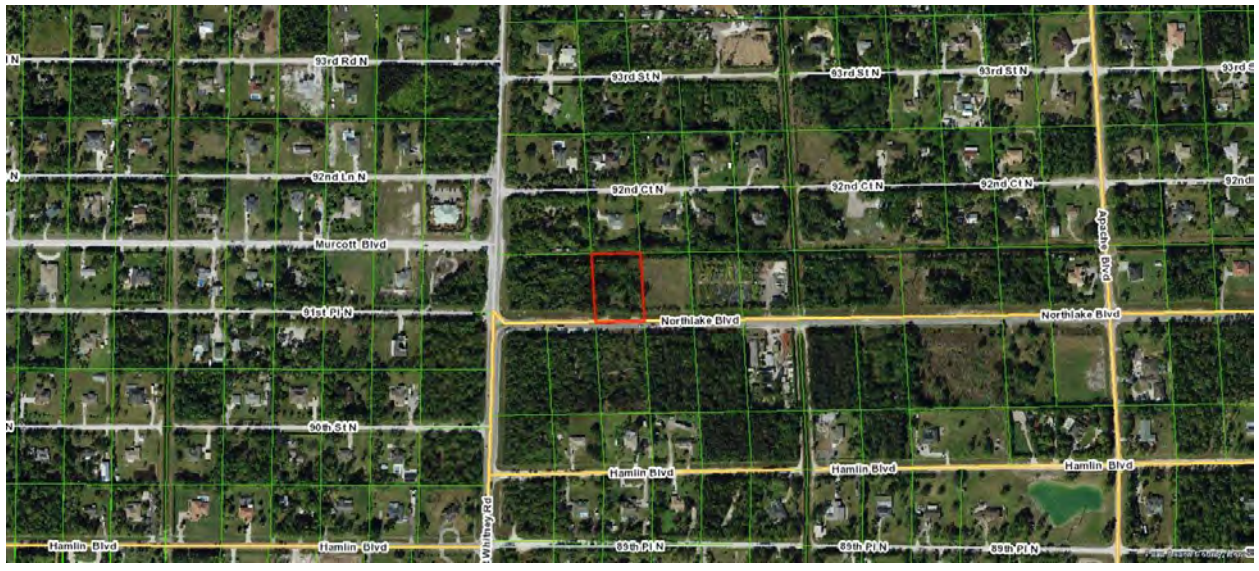
Remarks: 1.39 Acre Vacant Parcel Located Near the Corner of Northlake Boulevard and Seminole Pratt Whitney Road. Easy Access to Highway 91, 710 and Interstate 95.

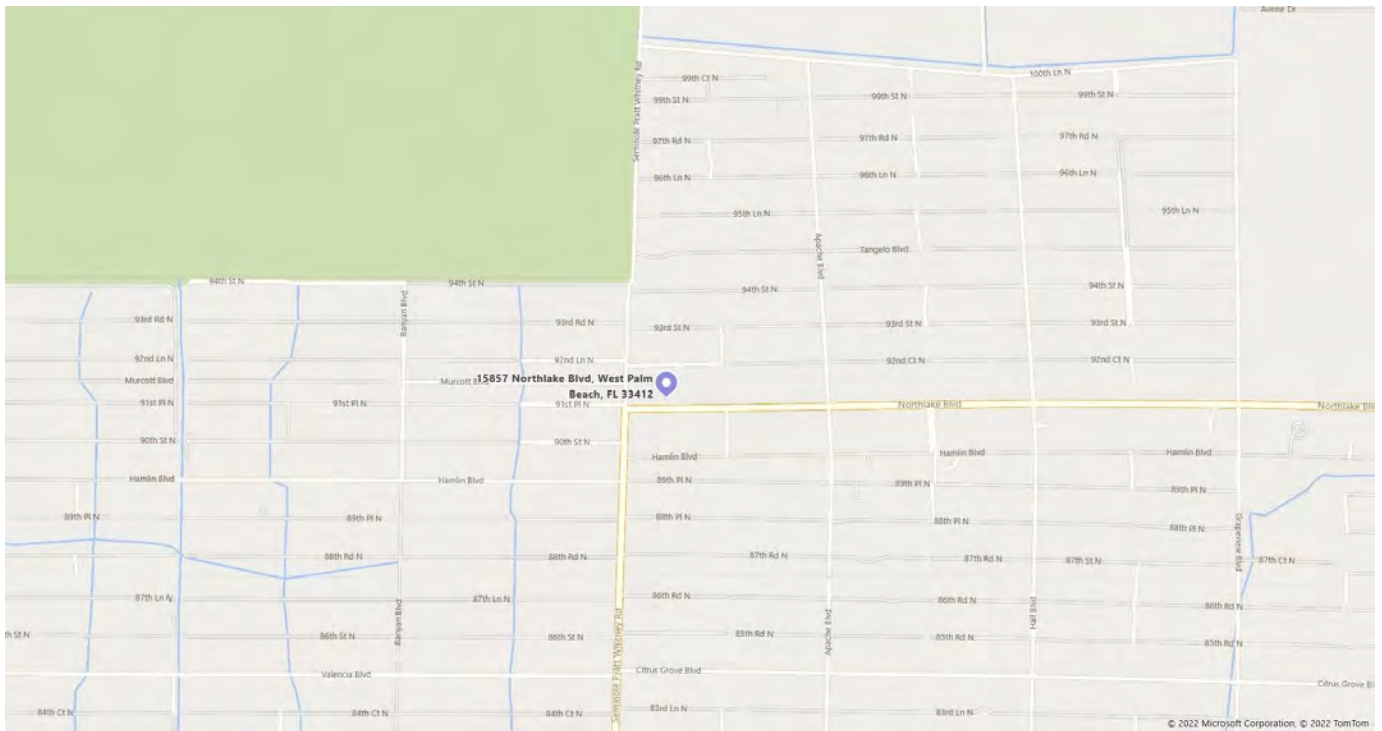
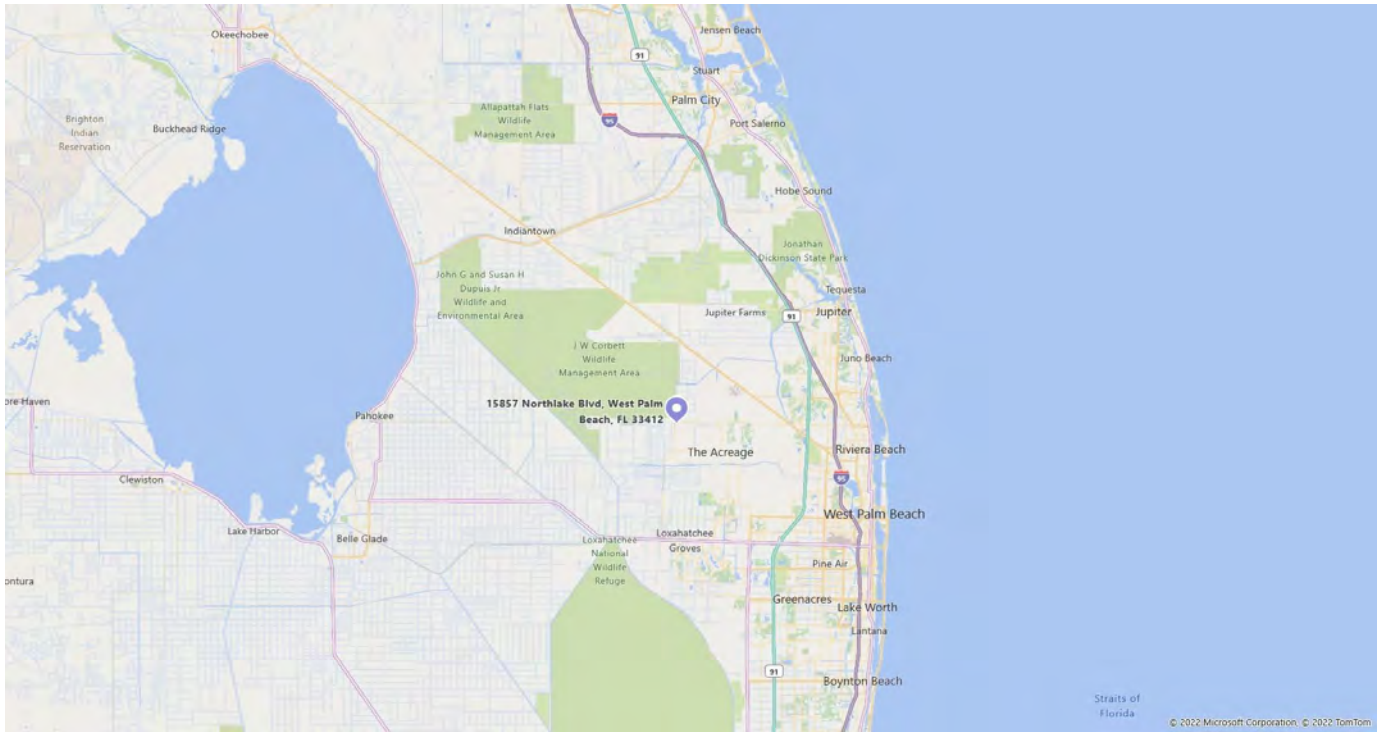
Price: \$ 495,000. ~ Sale

Please call **Ray S. Smith** of **Stafford Smith Realty** at **(732) 747-1000** for further details.

As we are representing the owner(s) of this offering, we ask that you do not enter the property without us and that you do not discuss the offering with tenants nor attempt to contact the owner(s). All information regarding property for sale, rental or financing is from sources deemed reliable. No representation is made as to the accuracy thereof and is submitted subject to errors, omissions, changes of price, rental, commission or other conditions, prior sale, lease, financing or withdrawal without notice.

630 Broad Street, Shrewsbury, New Jersey 07702-4118
4440 PGA Blvd., Ste. 600, Palm Beach Gardens, Florida 33410-6542
732-747-1000 • Ray@SSRealty.com • www.SSRealty.com



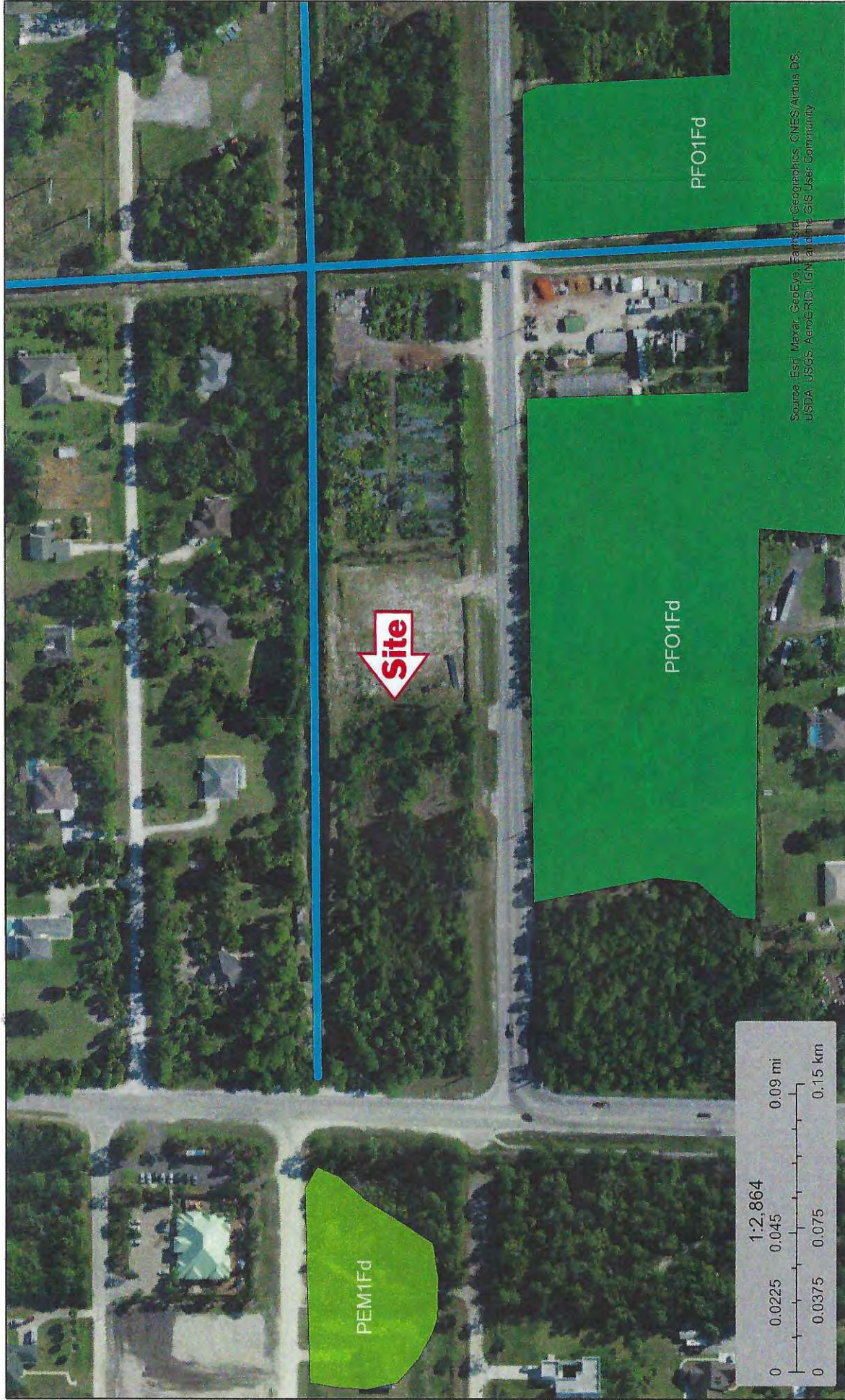




U.S. Fish and Wildlife Service

National Wetlands Inventory

WETLANDS MAP



January 21, 2022

Wetlands

- Estuarine and Marine Deepwater
- Estuarine and Marine Wetland

- Freshwater Emergent Wetland
- Freshwater Forested/Shrub Wetland
- Freshwater Pond

- Lake
- Other
- Riverine

This map is for general reference only. The US Fish and Wildlife Service is not responsible for the accuracy or currentness of the base data shown on this map. All wetlands related data should be used in accordance with the layer metadata found on the Wetlands Mapper web site.

PALM BEACH GARDENS POPULATION STATISTICS

PALM BEACH GARDENS POPULATION & AGE

DISTRIBUTION

TOTAL POPULATION

59,182

AGE

Under 5 Years:

3.8%

5 - 17:

11.7%

18 - 24:

4.3%

25 - 34:

11.8%

35 - 54:

23.5%

55 - 64:

15.1%

Over 65 Years:

29.9%

EDUCATIONAL ATTAINMENT OF ADULTS

Attending College

3.3%

High School Graduates

95.7%

College Graduated

52.4%

0.0%100.0%

% OF RESIDENTS

INCOME

PER CAPITA INCOME

Palm Beach Gardens

\$61,836
USA

\$34,103

MEDIAN HOUSEHOLD INCOME

Palm Beach Gardens

\$87,969
USA

\$62,843

INDIVIDUALS BELOW POVERTY LEVEL:

6.2%

EMPLOYMENT INDUSTRIES IN PALM BEACH GARDENS

Professional, scientific, and technical services

13.5%

Healthcare

12.1%

Retail

9.5%

Accommodation

8.6%

Education

6.9%

Finance

6.3%

Other

6.2%
Manufacturing

5.9%
Real estate

5.0%
Construction

5.0%
Arts

4.6%
Administration

3.3%
Transportation

3.0%
Public Service

2.6%
Utilities

2.5%
Wholesale

2.2%
Information Technology

2.1%
0.0%100.0%

% OF RESIDENTS

RACE & ETHNIC DIVERSITY

White

78.4%
Hispanic or Latino (Of Any Race)

9.4%
Black or African American

5.7%
Asian

4.3%
Other Race / Two or More Races

2.2%
Native Hawaiian and Other Pacific Islanders

0.0%
American Indian and Alaska Native

0.0%
0.0%100.0%

% OF RESIDENTS

ANCESTRIES & LANGUAGES SPOKEN

ANCESTRY (TOP 20)

German

13.5%
Irish

11.8%
Italian

11.3%
English

8.8%
Polish

5.6%
Russian

4.2%
Haitian

2.5%
French

2.4%

Scottish

2.2%

Eastern European

1.8%

European

1.7%

Swedish

1.4%

Dutch

1.3%

Scots-Irish

1.3%

Hungarian

1.2%

French Canadian

0.9%

Welsh

0.8%

British

0.7%

Canadian

0.6%

Norwegian

0.6%

0.0%100.0%

% OF RESIDENTS

LANGUAGES SPOKEN (TOP 20)

English

82.7%

Spanish

7.3%

French

3.0%
French Creole

1.2%
German/Yiddish

1.1%
Langs. of India

1.0%
Chinese

0.7%
Portuguese

0.5%
Tagalog

0.4%
African languages

0.4%
Polish

0.3%
Arabic

0.3%
Hungarian

0.3%
Slavic languages

0.3%
Other Asian languages

0.2%
West Germanic languages

0.2%
Greek

0.2%
Russian

0.2%
Other Indo-European

0.2%
Italian

0.2%
0.0%100.0%

% OF RESIDENTS

FOREIGN BORN PALM BEACH GARDENS RESIDENTS:

15.3%